

OVERVIEW

100 ft. (30.5m) OCEAN CONDO MOTORYACHT



Designed as a home afloat, this vessel has loads of features tailored to the life style of an urbanite. Private space and entertaining room are on separate decks with plenty of glass and easy access to the outdoors. The top deck is entirely given over to the Owner with a large apartment, skylounge, and outside deck. Sliding glass doors port and starboard let in the light as well as fresh air. Forward of this is and half a deck down is the bridge. Down another half a flight is the main salon, dining room, and galley with a pass-through to the main aft deck for alfresco dining and outdoor entertaining. Sliding glass doors on the port side and aft make this area bright and airy. Forward are two large guest staterooms each with their own head. The lower deck has two additional guest staterooms as well as two crew cabins. Don't worry about the stairs, there is an elevator as well.

Forward is all mechanical space accessible from the crew compartment. There are also large electrical cabinets port and starboard amidships to house the batteries and hybrid propulsion monitoring systems. The aft engine room is spacious with a garage just off the swim platform, for a compact electric car.

The large swim platform is fitted with a transformer capable of lifting the catamaran landing craft into the water or carry the car to the pier. The landing craft can also be used to take the car ashore for excursions. The main deck house is offset increasing the already spacious interior. A walk along the port side forward will lead you up to the raised fore deck with sun lounging pads. There is also access to the bridge. A walk around to the starboard side will bring you to steps up to the master deck.

A hybrid propulsion system is planned. Silent electric power will move the vessel along at 6 knots for harbour and river cruising, with the twin diesels able to take the vessel up to 16 knots for extended cruises. Solar cells cover the entire top deck to extend the time between generator runs.

The super fuel-efficient, semi-displacement hull form that has been thoroughly tank tested with our latest hull technology to ensure superior powering characteristics and seakeeping. The aluminium hull is a conically projected, double chined form with wide spray knocker, flared bow, and a transom stern. It is longitudinally framed with wide spaced transverse frames for maximum strength.

PRINCIPAL DIMENSIONS (approx.)

Length Overall	30.5m (100'-0")
Length Waterline	30.0m (98'-6")
Beam	7.5m (24'-6")
Draft	1.37m (4'-6")
Displacement (S.W.)	111 Tonnes (245,000 lbs.)

CONSTRUCTION

Hull and Superstructure	Aluminium
Class	Lloyd's Register

TANKAGE

Fuel Capacity	13,250 L (3,500 US gal.)
Fresh Water Capacity	3,785 L (1,000 US gal.)
Grey & Waste Water Capacity	1,900 L (500 US gal. each)
New & Used lube oil storage	375 L (100 US gal. each)

MACHINERY

Main Engines	2 x 625 HP Intermittent rating
Gensets (diesels)	2 x 60 kw (50 Hz)
Watermakers (reverse osmosis)	2 x 1,000 US gal. per day

POWERING PREDICTIONS (estimated)

6 knots: 2 x 50 HP	electric power	range = 400 knt. miles
10 knots: 1 x 120 HP	fuel consumption 6 gal/hr	range = 5950 knt. miles
12 knots: 2 x 125 HP	fuel consumption 11 gal/hr	range = 3750 knt. miles
14 knots: 2 x 300 HP	fuel consumption 26.5 gal/hr	range = 1840 knt. miles
16 knots: 2 x 625 HP	fuel consumption 54.8 gal/hr	range = 1020 knt. miles

STABILITY (half loaded, intact, estimated)

Positive righting arm past 160 degrees
Downflooding point past 60 degrees
GM = 4.0 ft.

MAIN ENGINES

2 x 625 hp diesels with underwater exhaust.

SHAFTS AND PROPS

2 x standard shafted 4 blade high performance props.

FUEL MANAGEMENT

A Racor filter and fuel management system shall be installed.

WATERTIGHT BULKHEADS

3 watertight bulkheads make for 4 watertight compartments.

SEACHEST SYSTEM

All seawater entering the boat comes in through 2 large Seachests with removable tops fitted above the waterline that may be opened when afloat to remove obstructions.

WASTE MANAGEMENT

A waste treatment plant shall be installed to latest regulations.

GROUNDING PLATE

A 1" thick heavy grounding shoe runs the full length of the keel bottom

FIXED/ACTIVE STABILIZERS

A stabilization system shall be installed utilizing a Key Power hydraulic system. Shipyard to fabricate the fins to a Bray Yacht design.

BOW THRUSTERS

Electric thruster to be fitted in the bow.

BOW ANCHOR WINDLASS

Muir windlass with power up and down switches

TRANSOM

The transom door shall hinge up to reveal a garage for a compact electric car. A section of the swim platform (transformer) shall also be lowered into the water (Opacmare).

GENSET

2 x Northern Lights diesel 60 kw 50 cycle genset with sound shield

AIR CONDITIONING

9 zone air-conditioning system fitted with chill chasers.
9 air changes per hour for all Accommodation areas.

BATTERY BANKS

Arranged into systems of priority. One system for starting the main engines, one for the gensets, and one system for house power.

INTERIOR

A quality yacht interior shall be fitted but without the need for the use of marble or gold fixtures. Interior cabinetry shall be American Walnut. Light cream carpets fitted throughout. Leather seating on all furniture.

EXTERIOR

House and hull to be faired and painted above the waterline. Teak decks to be installed.

TANKS

All the tanks are integral under the lower sole.

PRESSURE WATER SYSTEM

Providing 40 – 60 p.s.i. continuous pressure.

CONSTRUCTION

The entire hull is designed without any compound curves eliminating the need for any stretch forming of plates. The double chined hull is conically projected so that large sheets may be applied without any need for forming or machine bending. The transverse frames are flanged plate with close spaced longitudinals sprung into place. There is approx. 29,500 kg (65,000 lbs.) of aluminium in the vessel's superstructure.

Maximum sound levels shall not exceed the following levels (dB A weighted) at 12 knots cruise speed:

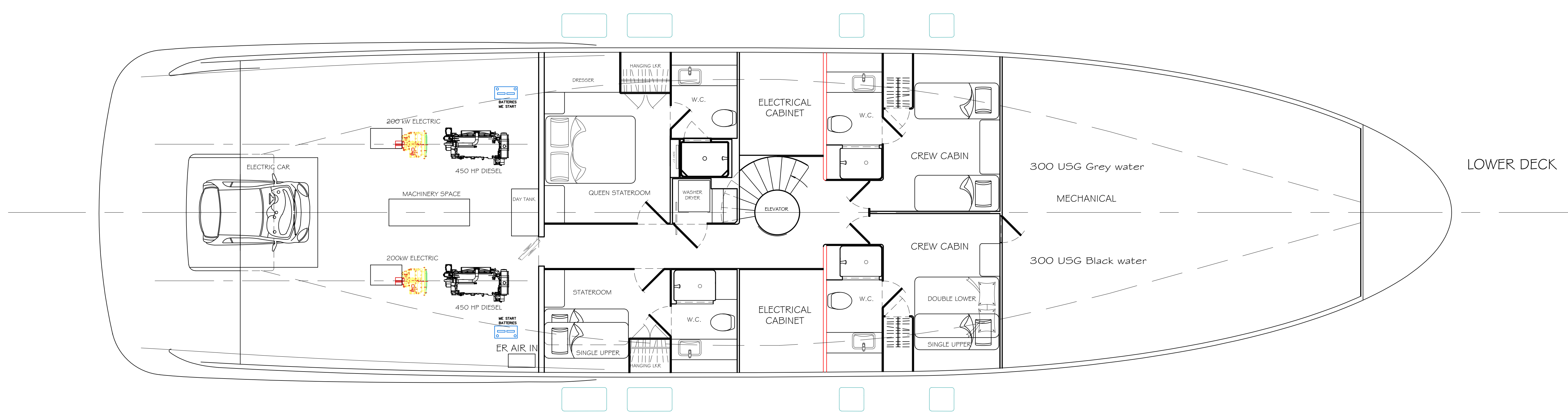
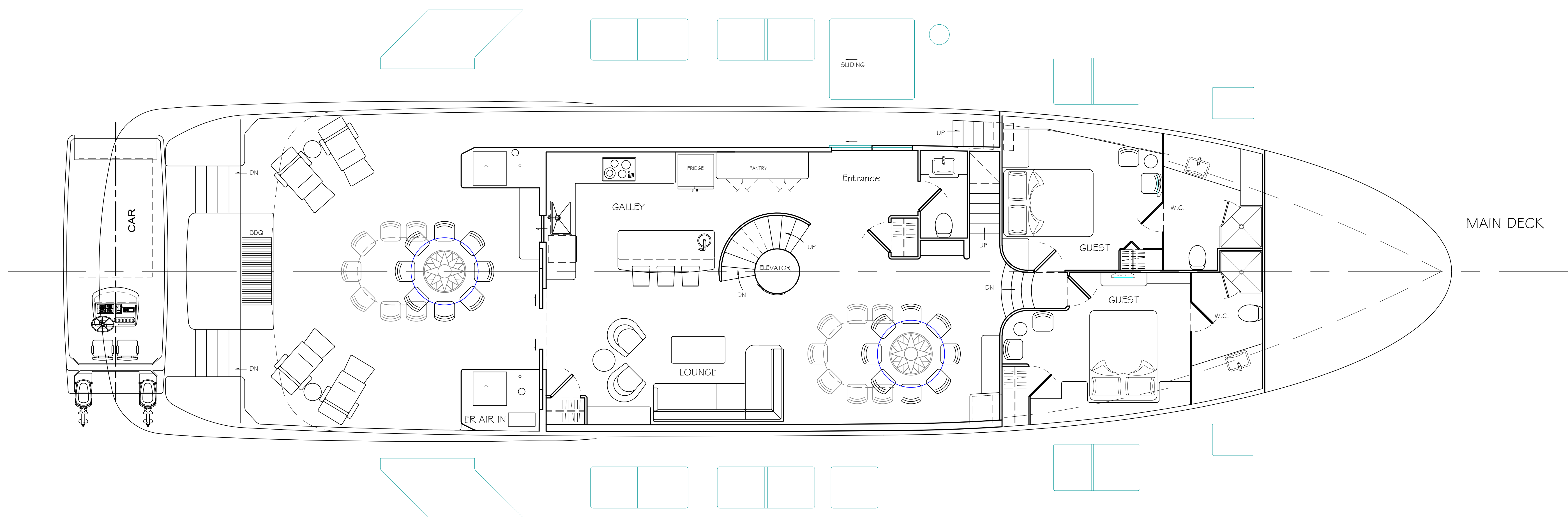
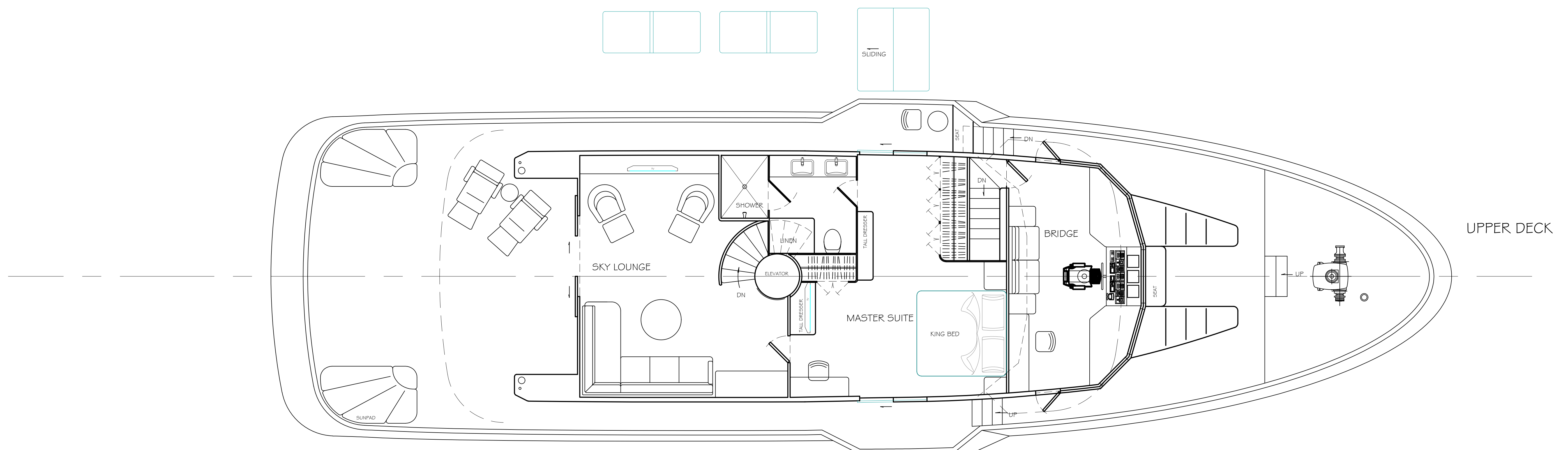
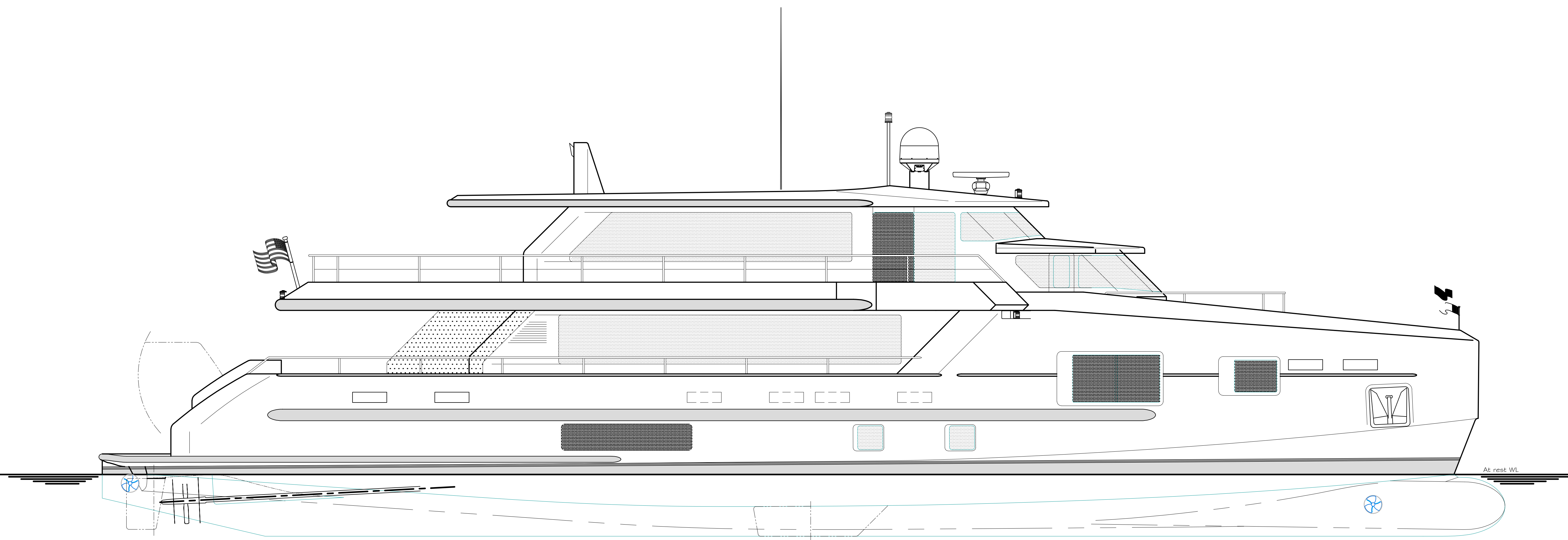
Owner's Accommodation -	55
Guest Accommodation -	60
Public rooms -	60
Recreational decks -	65
Crew cabins -	60
Crew day room -	65
Bridge -	65

ALL RIGHTS RESERVED

This information, all associated materials and their contents are the physical and intellectual property of

BRAY YACHT DESIGN AND RESEARCH LTD

and may not be copied, duplicated, given out, or used without their prior written permission



GENERAL ARRANGEMENT I
 100' MOTORYACHT
 "OCEAN CONDO"
 LOA 100' - 0" BEAM 24' - 6"
 LWL 98' - 6" DRAFT 4' - 6"
 SCALE: 1/4" = 1' - 0"
BRAY
 YACHT DESIGN
 AND RESEARCH
 WORLD COPYRIGHT
 THIS DRAWING AND ALL ITS CONTENTS REMAIN
 THE PHYSICAL AND INTELLECTUAL PROPERTY
 OF BRAY YACHT DESIGN AND RESEARCH LTD.,
 AND SHALL NOT BE COPIED, DUPLICATED,
 GIVEN OUT, OR USED, WITHOUT THEIR PRIOR
 WRITTEN CONSENT.
 REV. DATE: MARCH 2019